

Efficient and reliable

- ◆ AC synchronous motor drive system for travelling and vibration, with energy consumption reduced by 20% and regenerative braking system during braking.
- ◆ The world's leading high-quality supplier of battery, motor and electronic control, safe and reliable.

Eco-friendly and economic

- ◆ Electric drive, zero pollution and emission, noise reduced by 20% during static rolling operation.
- ◆ More than 60% of the comprehensive operation cost (fuel and maintenance costs) can be saved. Meet the operation requirements of a typical working day.

Convenience

- ◆ Shared car charging pile, fast charge for only 60 min at a time.
- ◆ No engine maintenance cost is required, and a full charge using a household slow charger only costs RMB 30



SANY HEAVY INDUSTRY CO., LTD.

Sany Industrial City, Changsha Economic and Technological Development Zone, Hunan Province, China
Zip: 410100
Fax: 0086-731-85835199 Enquiry and Complaint Telephone: 0086-4006098318

Warm reminder:
As the technology is constantly updated, technical parameters and configurations are subject to change without prior notice.
The machine on the picture may include additional equipment, this album is for reference only, subject to the actual.
The copyright belongs to SANY Heavy Industry, and no part of this catalog may be reproduced or copied for any purpose without SANY Heavy Industry's written permission.

© China print Apr. 2025 edition



Scan the QR code to follow
the WeChat Official Account of
SANY Road Machinery

V 20250703

SANY®

SPECIFICATION



Road roller STR50E

QUALITY CHANGES THE WORLD

www.sanyglobal.com

Product Highlights



STR50E

Electric
Road roller

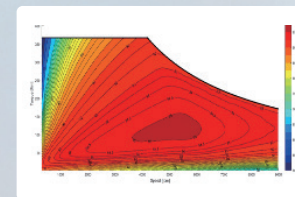
Long endurance and low cost

- ◆ 60kWh Battery, 348V.
- ◆ Electric Drive System: Vibration and travel functions utilize direct-drive electric motor technology.
- ◆ Large-capacity battery + high-efficiency electric system, meeting the construction requirements of at least one shift.
- ◆ Low maintenance cost of the battery, motor and electronic control systems. And only routine maintenance is required.



Efficient and accurate

- ◆ The maximum driving efficiency of the motor is 95%, and the vibration efficiency is over 90%. The efficiency is improved and the heat loss is significantly reduced;
- ◆ Regenerative braking system can be carried out like automobiles, and the energy feedback rate is up to 60%;
- ◆ The electric drive and battery cooling system adjusts the flow rate and wind speed in real-time based on temperature to reduce energy consumption.



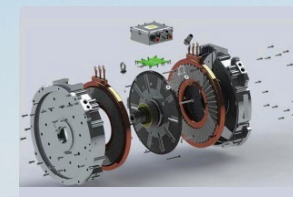
Convenient charging

- ◆ Universal vehicle charging pile, with fast charging and slow charging systems.
- ◆ Rapid charging achieves 80% SOC in 1h (CCS2 DC), while a 30-minute charge delivers 3h runtime.
- ◆ Flexible charging solutions support on-site deployment wherever grid access is available.



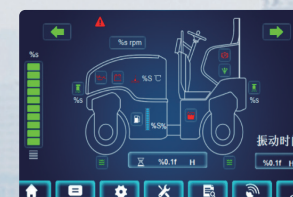
Highly reliable battery, motor and electronic control components

- ◆ The battery scheme that meets the work mechanical vibration requirements is adopted.
- ◆ Liquid cooling thermal management system + battery self-heating, suitable for both hot and cold environments.
- ◆ The bearing capacity of the motor and high anti-seismic design of the structure can withstand an impact of more than 10g.
- ◆ IP68 certified (IEC 60529) for high voltage system.



SANY intelligent control technology

- ◆ Independent control of front and rear drums, upgraded flexible start/stop, better smoothness.
- ◆ Vibration of front and rear drums is controlled independently, with continuous modulation of vibration frequency.
- ◆ Optional intelligent compaction monitoring system.



Product optional configuration

Item	Description of additional/optional configuration	Comment
Canopy	Configuration of control platform canopy	Optional
Intelligent compaction system	Used for online detection of compactness on construction site	Optional

*: The above configurations need to be priced separately.

Economic value analysis

SANY STR50E electric tandem drum roller can create an additional value of €4 600 for customers every 1000 hours.

1. Low energy consumption and long endurance – annual savings: €4 200 (vs. diesel models)

- ◆ TCO calculation based on EU electricity price € 0.32/kWh

2. Initiate more works

- ◆ There is no noise in the static pressure process, and there is no complaint at night or during densely populated operation.
- ◆ There is no emission in electric operation, and there are no restrictions on municipal work.

Note: Calculated as 1000h yearly.

3. Low maintenance cost – annual savings: €420

- ◆ The battery, motor and electronic control system only needs simple maintenance, annual savings: € 420 (vs. diesel models).

Service environment of product

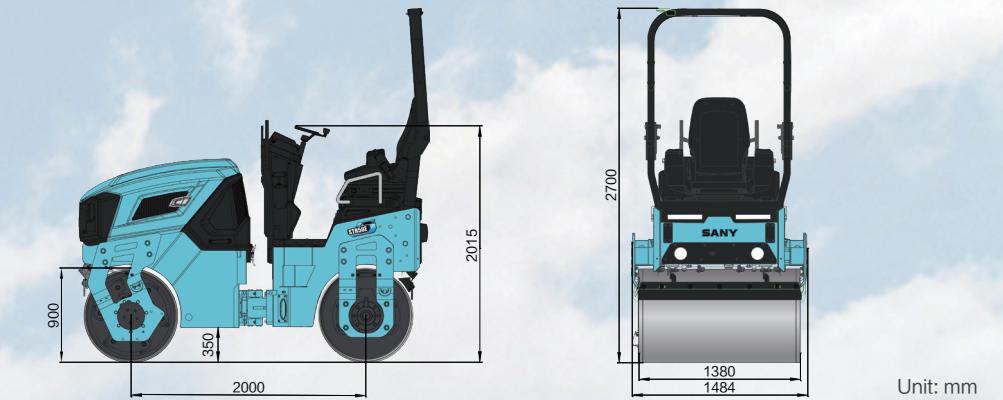
- ◆ Altitude: ≤3000m
- ◆ Temperature: -20℃ ~ 45℃
- ◆ Gradient: ≤40%



Product Parameters

◆ Overall Dimensions

The following are standard configuration measurements; actual values may vary depending on optional components.



Unit: mm

Item	STR50E
Battery capacity (kWh)	60
Type of power battery	Lithium iron phosphate
Power of travel motor (kW)	20
Vibration motor power (kW)	7.3
Operating mass (kg)	4750
Static linear load (N/cm)	160
Frequency (Hz)	50/58
Amplitude (mm)	0.5
Centrifugal force (kN)	46/62
Steel drum diameter/width (mm)	900/ 380
Max. gradeability without/with vibr. (%)	30/40
Direct Current Fast Charging (DCFC)	Available
AC Slow Charging	Available